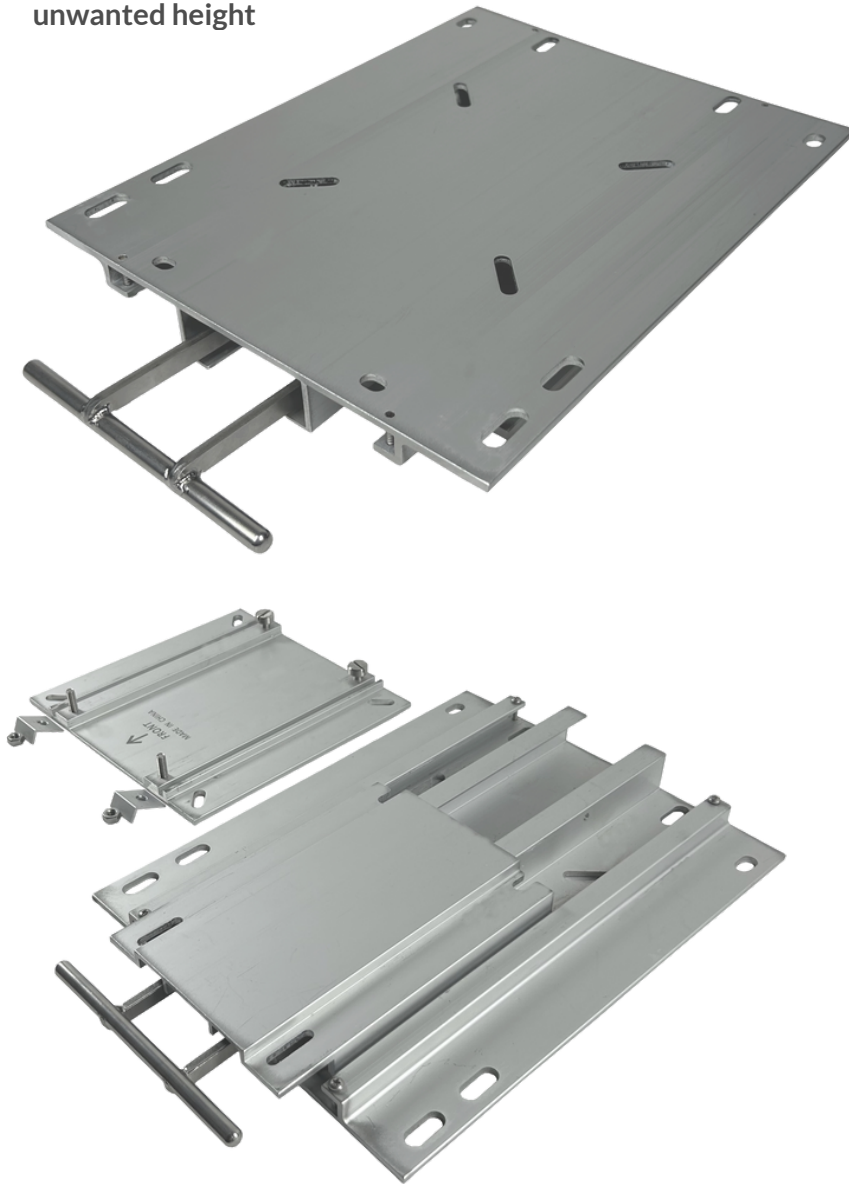




LOW PROFILE SLIDE

Designed to add easy slide adjustments to a box mounted application without adding unwanted height



- Two piece design allows for easy installation without the use of any specialized tools.
- Anodized aluminum construction for increased strength and corrosion resistance.
- Towel bar locking lever allows easy operation and access to over 6" of fore and aft seat adjustment.
- Unique design adds only 1.5" of height when installed

Helping deliver the boating experience your brand deserves.

www.forestarindustries.com

